

WELCOME
FROM THE EDITOR



passion projects

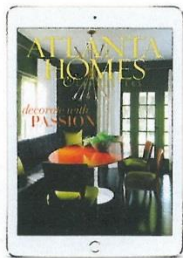
IN TODAY'S WORLD OF INSTANT EVERYTHING, taking the time to get something not just right, but darn-near perfect seems almost counter-culture. Why does being 100 percent present; devoting your energy solely to accomplishing one task; and eliminating distraction seem like yeoman's work?

Our October issue explores in depth residences that are both restrained and welcoming. While these two adjectives are seemingly irreconcilable, it's possible to achieve both when passions of the designers and their clients are kept in check. In "Modern Milieu" (page 54), interior designer Kay Douglass' flair for the spare is emboldened by punches of playful color in citron, citrus and lilac. Douglass has always been known for her dramatic contrasts, but here, they emerge through artfully arranged pairings placed in elegant restraint. In "Poetry of Place" (page 64), architect Bobby McAlpine and interior designer Betsy Brown strike a rare balance between the ethereal and the austere with an intriguing residence where rhythmic gestures meet a studied seriousness, both inside and out.

The architect, whose book, *Poetry of Place: The New Architecture and Interiors of McAlpine*, debuts this month, sums up his passion for creating personal spaces: "The net reward is creating a place so congruous to who you are that there is nowhere else in the whole world that makes you and your loved ones feel that particular way, because it's an extension of who you are, and it could not exist without you." Breathing an intangible spirit into the tangible is a talent, indeed.

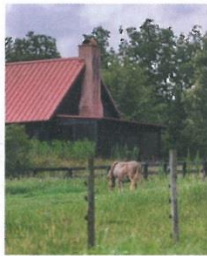
Elizabeth Ralls, *Editor in Chief*
@elz_ralls | instagram

PORTRAIT BY MALLAZ/MA



DIGITAL EDITION

Read *AH&L* on your tablet! Find local design inspiration at the tip of your fingers with *AH&L*'s new app, available on your tablet and smartphone. Available through iTunes.



WHAT'S NEW!

Join *Atlanta Homes & Lifestyles* for our fourth-annual **SERENBE SHOWHOUSE** through October 8. More than 10 designers have decorated a pair of townhouses by Rhinehart Pulliam. **PAGE 40**



DON'T MISS

THRIFT STUDIO Support Dwell with Dignity Atlanta's mission to help families escape poverty and homelessness through design by shopping high-end decor sold at significant discounts. adaatlanta.com/events

STYLE

IDEAS // DISCOVERIES // DEBUTS



MARIAM MEDVEDEVA

Subtle Splendor

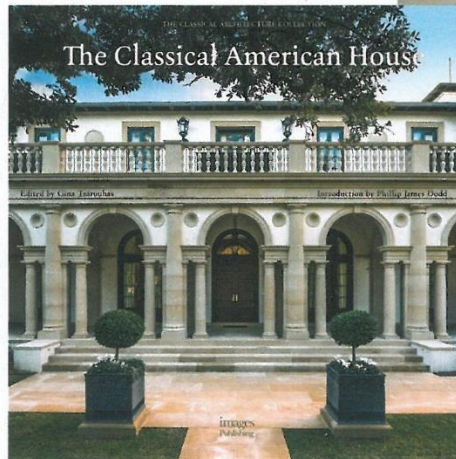
Inspired by the 18th-century Chinoiserie wallpaper panels found inside the Paris apartment of style icon and baroness Pauline de Rothschild, the brand-new, hand-painted **DE GOURNAY** Salon Vert design evokes the look of a genuine antique thanks to delicate brushwork and a muted palette. The result of expansive research into historical wallpaper installations, De Gournay's graceful interpretation allows clients the unique opportunity to use a design of historic proportions in a contemporary context. Available to the trade at Ainsworth-Noah, ADAC, (404) 231-8787; ainsworth-noah.com

STYLE
NEWS

CURRENTLY COVETING

The season's latest design collections, shopping destinations and must-reads are on our radar for autumn

WRITTEN BY *The Editors*



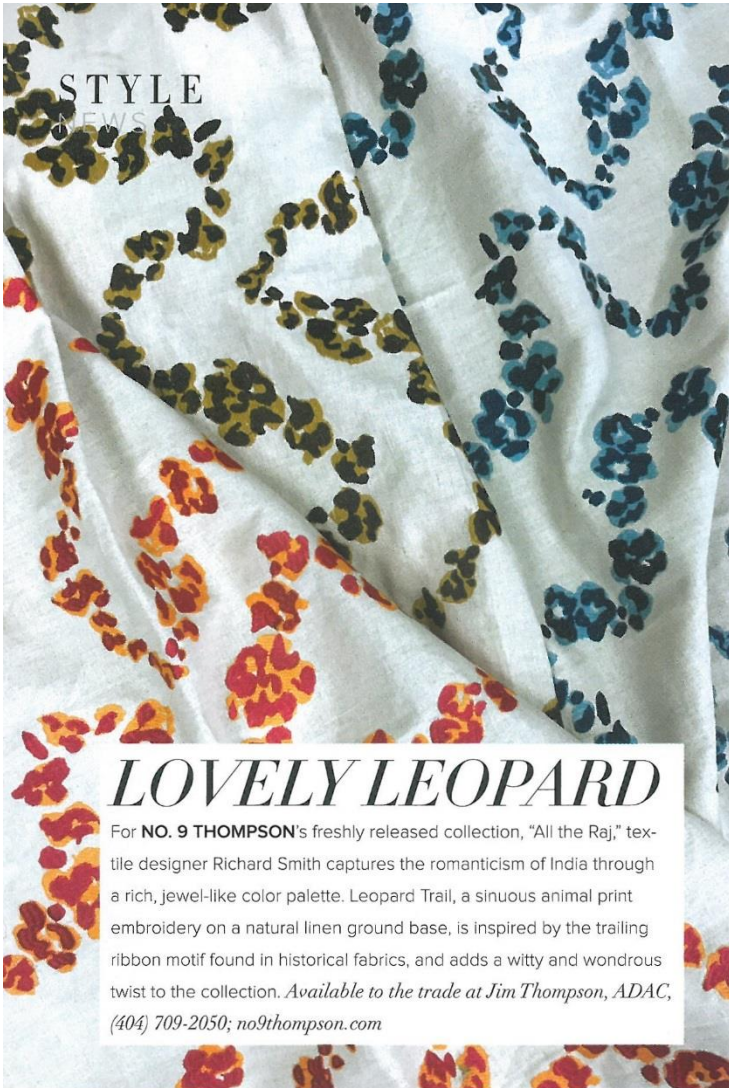
CLASSIC REDUX

Profiling seven of the country's most prominent architects—including Louisiana-based Ken Tate Architects (pictured is his Covington, La., project) and Florida-based Smith Architectural Group—**THE CLASSICAL AMERICAN HOUSE** (Images Publishing, \$95) features 352 pages of luxurious interiors in the classic style. With an introduction by editor Phillip James Dodd, the gorgeous tome encompasses everything from new-builds and renovations to urban abodes and rural retreats. imagespublishing.com



Country Strong

Scenic country woodland getaways are the engrossing and elegant subject of Lodge II by **LEE JOFA**, a follow-up to its popular Lodge collection. Continuing this narrative with archival prints, luxurious textured wools, lush chenille and sophisticated embroideries, along with stylish wallcoverings, the colorways for this collection range from the rich, saturated jewel tones of reds, blues, teals and greens to nature-inspired neutrals including cream, stone, charcoal and coffee. Available to the trade at Lee Jofa, ADAC, (404) 812-6995; leejofa.com



STYLE
NEWS

LOVELY LEOPARD

For **NO. 9 THOMPSON**'s freshly released collection, "All the Raj," textile designer Richard Smith captures the romanticism of India through a rich, jewel-like color palette. Leopard Trail, a sinuous animal print embroidery on a natural linen ground base, is inspired by the trailing ribbon motif found in historical fabrics, and adds a witty and wondrous twist to the collection. Available to the trade at *Jim Thompson, ADAC, (404) 709-2050; no9thompson.com*

THE PERFECT ACCESSORY

Handmade from wood species in France's Tronçais forest, **LIAIGRE**'s Essence Jars are the result of an Irish cabinetmaker established in France. The oak and walnut woods used for the different finishes are chosen as close as possible to the heart of the tree, where the wood is the most beautiful. Several successive stages of cutting, turning, shaping and sanding give the pieces their unique beauty and sensuality. Available to the trade at *Jerry Pair, ADAC, (404) 261-6337; jerrypair.com*



A FLAIR FOR FABULOUS

A retrospective of acclaimed designer Tom Britt's extraordinary career, **FABULOUS! THE DAZZLING INTERIORS OF TOM BRITT** (Rizzoli, \$75) celebrates the designer's most significant projects from the past 50 years. Written by design editor and writer Mitchell Owens and featuring a preface by Britt, the tome, which debuts this month, includes 200 color photographs of Britt's bold designs, which span the globe and embody his influence on the current design landscape. *rizzoliusa.com*

